

1



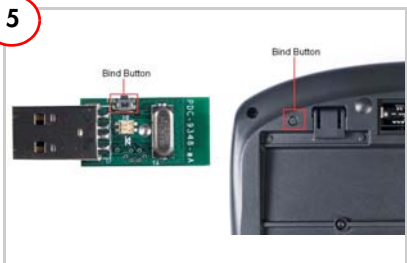
Remove the CY4672 PRO LP Reference Design Kit bridge dongle, keyboard, and mouse from the package.

3



Power the mouse and keyboard with two AA batteries each.

5



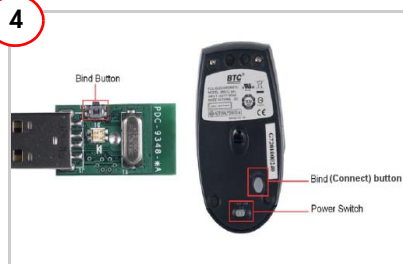
Press the bind button on the bridge; the red LED blinks. Press the bind button on the keyboard to bind it with the bridge. The mouse and keyboard work smoothly with the PC.

2



Connect the bridge dongle to the PC. The bridge enumerates as a human interface device (HID).

4



Turn on the mouse. Press the bind button on the bridge; the red LED blinks. Press the bind button on the mouse to bind it with the bridge.

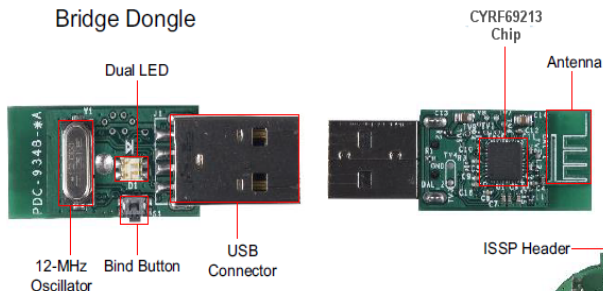
6



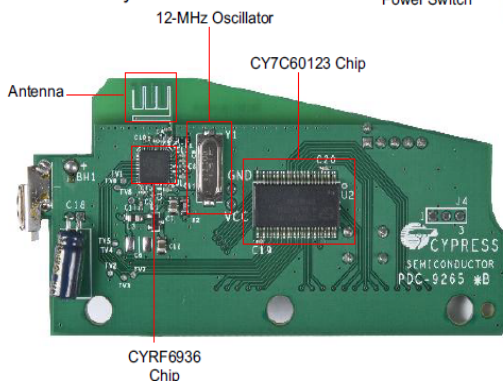
Insert the CY4672 kit CD. Install PSoC Designer and PSoC Programmer.

CY4672 ProC LP Reference Design Kit Details

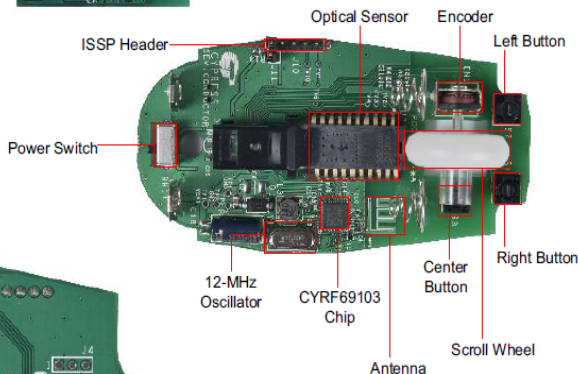
Bridge Dongle



Keyboard



Mouse



For the latest information about this kit, visit
<http://www.cypress.com/go/CY4672>

Mouser Electronics

Authorized Distributor

Click to View Pricing, Inventory, Delivery & Lifecycle Information:

Cypress Semiconductor:

[CY4672-40QFN-FK](#) [CY4672-69103](#) [CY4672-69103-POD](#) [CY4672-69213](#) [CY4672-69213-POD](#) [CY4672](#)